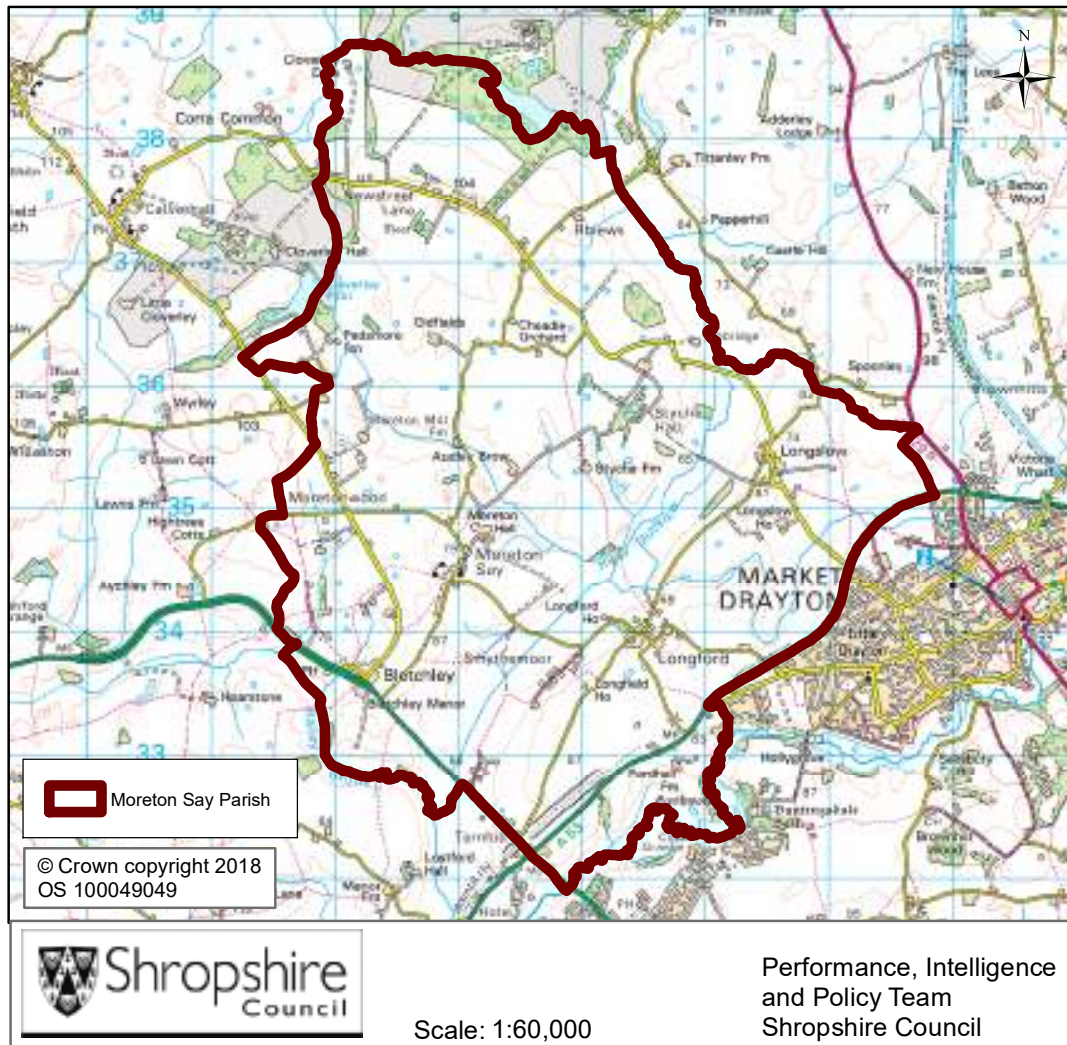


Moreton Say Parish



Key Facts:	Moreton Say Parish
Area:	2162.7 hectares
Population Density:	0.20 persons per hectare
Total Population	485 (250 males, 235 females)
Household Population:	485 (100.0%)
Households: Dwellings:	189 202
Communal Establishment no. / population	0 Communal Establishments 0 residents (0.0% of total population)

Source: 2011 Census, National Statistics.

Please note: Ward boundary changes in 2009 mean it is not possible to compare over time.

Population

	Total Population	% of Total Population			
		Moreton Say	Shropshire	West Midlands	England
All ages	485	100.0	100.0	100.0	100.0
0 – 4	29	6.0	5.1	6.3	6.3
5 – 9	30	6.2	5.1	5.8	5.6
10 – 14	26	5.4	5.9	6.1	5.8
15 – 19	20	4.1	6.2	6.6	6.3
20 – 24	17	3.5	5.4	6.8	6.8
25 – 29	29	6.0	5.1	6.5	6.9
30 – 34	25	5.2	5.0	6.1	6.6
35 – 39	29	6.0	5.8	6.4	6.7
40 – 44	50	10.3	7.2	7.3	7.3
45 – 49	39	8.0	7.7	7.2	7.3
50 – 54	42	8.7	6.9	6.3	6.4
55 – 59	37	7.6	6.6	5.7	5.7
60 – 64	49	10.1	7.3	6.0	6.0
65 – 69	26	5.4	6.2	5.0	4.7
70 – 74	14	2.9	4.9	4.0	3.9
75 – 79	11	2.3	3.8	3.2	3.1
80 – 84	8	1.6	2.9	2.4	2.4
85 – 89	2	0.4	1.8	1.5	1.5
90 Plus	2	0.4	0.9	0.7	0.8

Population Age Structure

- Early years: 6.0% (29 children) of the population were aged 0 to 4 years in March 2011. This compares with 5.1% at County level, 6.3% regionally and 6.3% nationally.
- School age: 14.4% (70 children) of the population were aged 5 to 17 years in March 2011. This compares with 14.9% at County level, 15.8% regionally and 15.1% nationally.
- Working age: 66.6% (323 people) of the population were aged 18 to 64 years in March 2011. This compares with 59.3% at County level, 61.0% regionally and 62.3% nationally.
- Retirement age: 13.0% (63 people) of the population were aged 65 and over in March 2011. This compares with 20.7% at County level, 16.9% regionally and 16.3% nationally.
- Over 85 year olds: 0.8% (4) of the population were aged 85 and over in March 2011. This compares with 2.7% at County level, 2.2% regionally and 2.2% nationally.

Diversity

- The 2011 Census showed Moreton Say Parish had a black and minority ethnic group population of 12 (2.47%). The largest broad ethnic group is 'Asian' (within this the largest group is 'Other Asian'). For the first time the 2011 Census showed Moreton Say Parish had a gypsy population of 8.
- When asked about their religion 24.9% (121 people) identified themselves as having no religion or did not state it on the form. The majority of people (73.4%) identified themselves as Christian and 1.6% (8 people) identified themselves as having an alternative religion.
- The 2011 Census showed that 1 person could not speak English well and but there was no one who could not speak English at all.

Car Ownership

- The 2011 Census showed that 5 households (2.6%) did not own a car and subsequently are reliant on other forms of transport such as public transport services. In total 390 cars are owned by households resident in the place plan area.

General Health

The 2011 Census asked three questions relating to health and the provision of unpaid care. The questions relate to whether people felt their general health was good, whether they looked after or gave help or support to other family members, friends, neighbours or others and lastly whether their day to day activities were limited because of a health problem or disability.

At the time of the 2011 Census 51% of people in Moreton Say said that they felt they were in "Very Good Health", this compares to 46% for Shropshire as a whole.

0.4% reported that they were in "Very Bad Health". This is slightly less than the overall result for Shropshire (1%)

Provision of Unpaid Care

The question asked "do you look after, or give any help or support to family members, friends, neighbours or others because of either; a long term physical or mental ill health/disability? Or because of problems related to old age?

At the time of the Census 9% said that they were providing 1 to 19 hours of unpaid care a week. This is slightly higher than the Shropshire figure of 7%.

1% said they provided between 20 and 49 hours per unpaid care. This is in line with the Shropshire figure of 1%.

3% said they provided over 50 hours of unpaid care. This is slightly higher than the figure for Shropshire as a whole (2%) and England & Wales (2%).

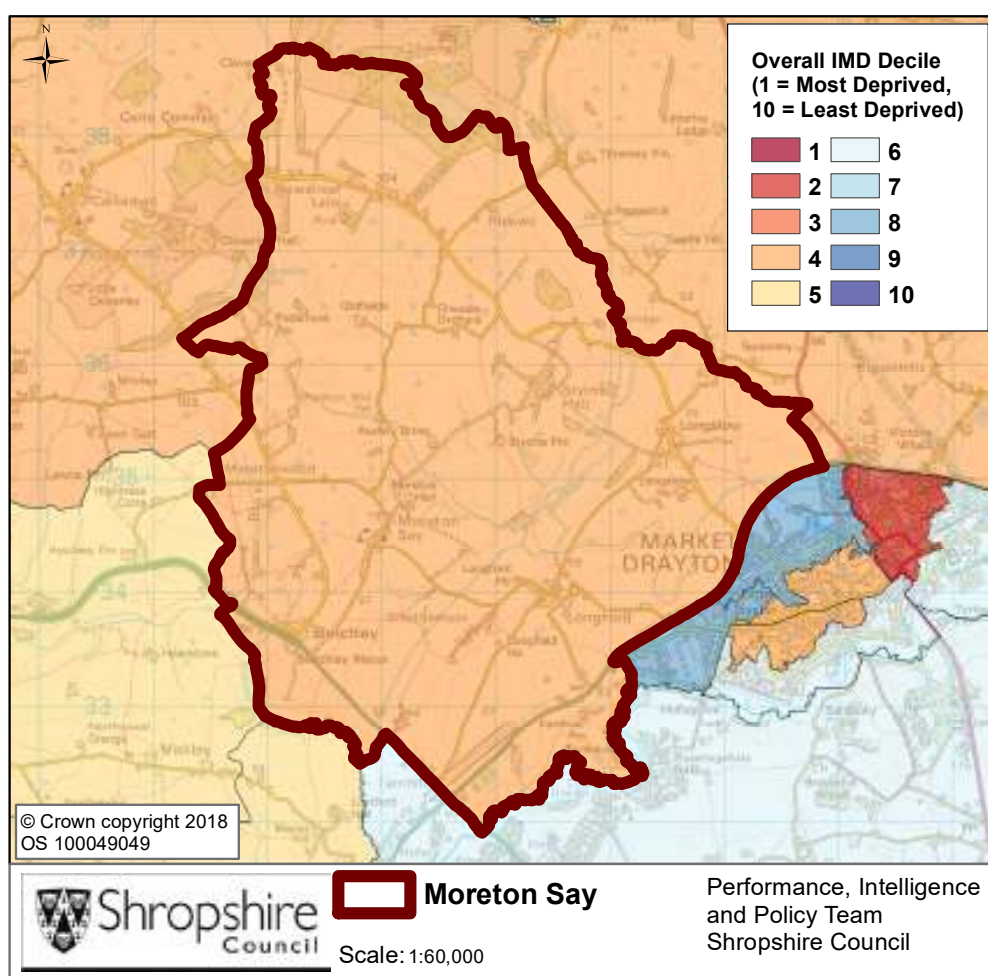
Long Term Illness or Disability

The Census asked "Are your day-to-day activities limited a lot due to a health problem or disability which has lasted, or is expected to last, at least 12 months?

6% said that their day-to-day activities were limited a lot due to a health problem or disability. This is less than the County figure of 8%.

The percentage who reported their day-to-day activities were limited a little was 6%. This is less than the figure of 10% for Shropshire as a whole.

Index of Multiple Deprivation 2015



The Lower Super Output Area (LSOA) that covers Moreton Say Parish fall within Decile 4 nationally.

Decile 1 contains LSOAs that are ranked within the 10% most deprived in England.

Source: IMD 2015, Department for Communities and Local Government, © Crown Copyright 2016

Contains National Statistics data © Crown copyright and database right 2016

Households and Housing

- There were 189 households in Moreton Say at the time of the 2011 Census.
- The Parish had 485 usual residents and covers an area of 2,163 hectares.
- 63 households were owner occupiers (owned outright) equating to 33.3% of all households. There were 59 households (31.2%) who owned their home with a mortgage or loan.
- There were 38 households (20.1% of all households) that privately rented their home from a landlord. There were also 9 households (4.8% of all households) who privately rented from a landlord classified as 'Other'.
- 5 households were renting social housing from the Council totalling 2.6% of all households. There were also 8 households (4.2%) renting social housing from 'Other' sources.
- In Moreton Say there were 112 detached dwellings representing 55.4% of all dwellings. There were also 75 semi-detached dwellings (37.1 %.) No terraced dwellings were recorded.
- 5.8% of all households were one person pensioner households.
- 28.0% of households in the area had dependent children. The number of married couple households with dependent children was 36 and the number of cohabiting couples with dependent children was 7.
- There were 7 lone parent households (with dependent children), which equates to 3.7% of all households.

Unemployment

- At the time of the Census, there were 12 residents who were unemployed but available for work. This is 3.2% of the 16-74 year old population, compared to 3.3% for Shropshire.
- 2 young people (aged 16-24) were unemployed, plus a further 5 who were 50 to 74.
- Long term unemployment is also an issue – 25.0% of all unemployed people were classed as long-term unemployed in 2011. This is the equivalent of 3 people.

Labour Force

- 281 Moreton Say residents aged 16-74 are economically active.
- 33.8% of the Moreton Say population has level 4 or above qualifications compared with 27.5% in Shropshire and 27.4% in England.
- The number with no formal qualifications at all stands at 91 people – at 23.0% of the population (aged over 16), this compares with the county average of 22.5%.
- 40.9% of the population work in standard occupation classifications 1-3 (managers, directors and senior officials, professional, associate professional and technical) and 17.1% work in standard occupation classifications 8 and 9 (process, plant and machine operatives and elementary occupations).

Travel to Work (Census 2011)

- 21.7% of the population in Moreton Say were self-employed, and 14.2% worked from home compared with 5.6% for Shropshire.
- The car is used as the main means of travel to work for 48.5%, while 1.6% use public transport.

If you require any further information, or have any other research requests, please contact:

Performance, Intelligence and Policy Team, Shropshire Council,
Shirehall, Abbey Foregate, Shrewsbury, Shropshire, SY2 6ND

Email: commissioning.support@shropshire.gov.uk

Web: www.shropshire.gov.uk/facts-and-figures